

1. GENERAL

Address :

Nouveau Monde – Esplanade de l’Ancienne Gare 3 – 1700 Fribourg

Tél. 0041 26 322 57 67

info@nouveaumonde.ch - www.nouveaumonde.ch

Light manager :

Simon Lambelet – simon@nouveaumonde.ch

Sound manager:

Valentin Descloux – valentin@nouveaumonde.ch

Capacity :

300 standing

100 to 130 seated (depends on the configuration)

Maximum sound level in swiss law : 100dB(A) Leq 60 minutes.

Access, load-in and parking :

Gare 3 – 1700 Fribourg

Access and load-in just behind the stage, ground level

Door dimensions : 2,5m width, 3,5m height

Parking : 1 vehicle authorised by band

Venue dimensions:

Wall to wall: length 16,20m / width 9,80m

Floor with black wood

Stage dimensions :

Entirely made with risers

Height : 80cm

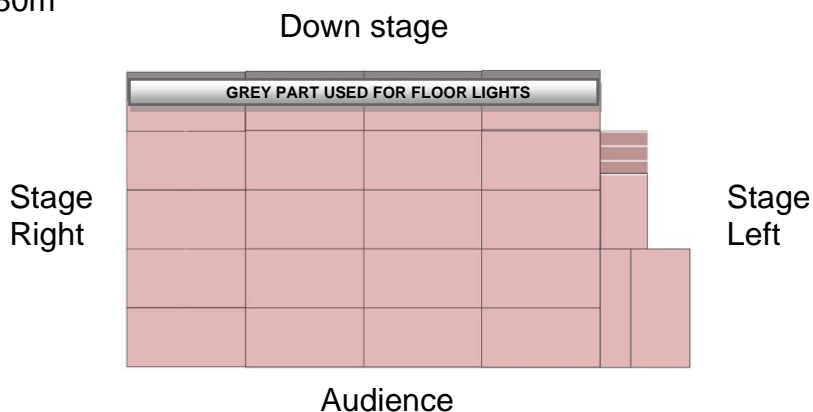
Clearance : 9,70m

Opening to stage frame : 7m

Depth : 4,5m

Height under perch (venue): 4,95 m

Height under perch (stage) : 4,15



Possibility of making a stage on the ground, size according to the configuration of the show and according to the capacity of reception of the desired public. Subject to approval by our technical team.

2. SOUND SYSTEM

Desk

1x Yamaha CL5 Digital mixing console, 72 + 8 St, 24 MIX, 8 Matrix
1x Yamaha QL1 (On request)
1x RIO 32-24
1x RIO 16-8

PA

10x L'Acoustics KARA, 2 voies 2x8"+3" 110° 139dB SPLmax (line array)
2x L'Acoustics X12, coaxiale 2 voies : 8" LF + 1" diaphragme HF (front fill)
2x L'Acoustics KS28, 2x18" 140dB SPLmax (subs)
2x L'Acoustics LA8 Contrôleur amplifié 4x1800W/4ohm (amps)
1x L'Acoustics LA12X Contrôleur amplifié 4x1800W/4ohm (amps)

Monitoring

8x L'Acoustics X15 HiQ, coaxial active 2 voies / 15"LF + 3" HF (speakers)
4x L'Acoustics LA8 Contrôleur amplifié 4x1800W/4ohm (amps)

Microphones

2x Shure Beta 91
3x Shure Beta 98
1x Shure Beta 52
7x Shure SM 57
10x Shure SM 58
3x Shure Beta 58
4x Shure Beta 57A
2x Shure Beta 56
3x Shure KSM 137 (small cond.)
2x Shure KM 184 (small cond.)
2x AKG C414 (large cond.)
1x Audix D6
1x Audix ADX-51 (small cond.)
1x Beyerdynamic M-88-TG
1x Beyerdynamic M-201-TG
4x Sennheiser MD-421
2x Sennheiser e614
4x Sennheiser e604
4x Sennheiser e904
2x Sennheiser e609
2x Sennheiser e906
1x AKG D112
1x Electrovoice N/D 868

DI

6x Klark Teknik DN100 (active)
8x BSS AR132 (active)
3x Radial Pro D2 Stereo (passive)

HF

2x Shure UR4D HF receiver (2x2 channels)
4x SM58 HF transmitter
2x headset Line6 HF transmitter

DJ Equipment

1x Pioneer DJM 800
1x Pioneer DJM 900 NX2
2x Pioneer CDJ2000 NX2
2x Technics MK II
2x Pioneer CDJ 350

4. BACKLINE

Drumset

Drum Workshop classic mapple

- Kick 20"
- Snare 14"
- 2x racktoms on stands / 1x floortom 10-12-14"
- 4x cymbals stands / Hihat stand / Snare stand / Drum stool

Miscellaneous

- Keyboard stands
- Guitar stands
- Lecterns

3. LIGHTS

FOH

1 X GrandMA3 compact XT

Moving Lights

Lighting Plot and Patch at the end of the document

Traditional lights:

4 X Digital Dimmer 12x2,3kW *Ma Lighting*

20 X PAR 64 1000W

10 X PC 1000W (avec 10 volets) *Robert Juliat*

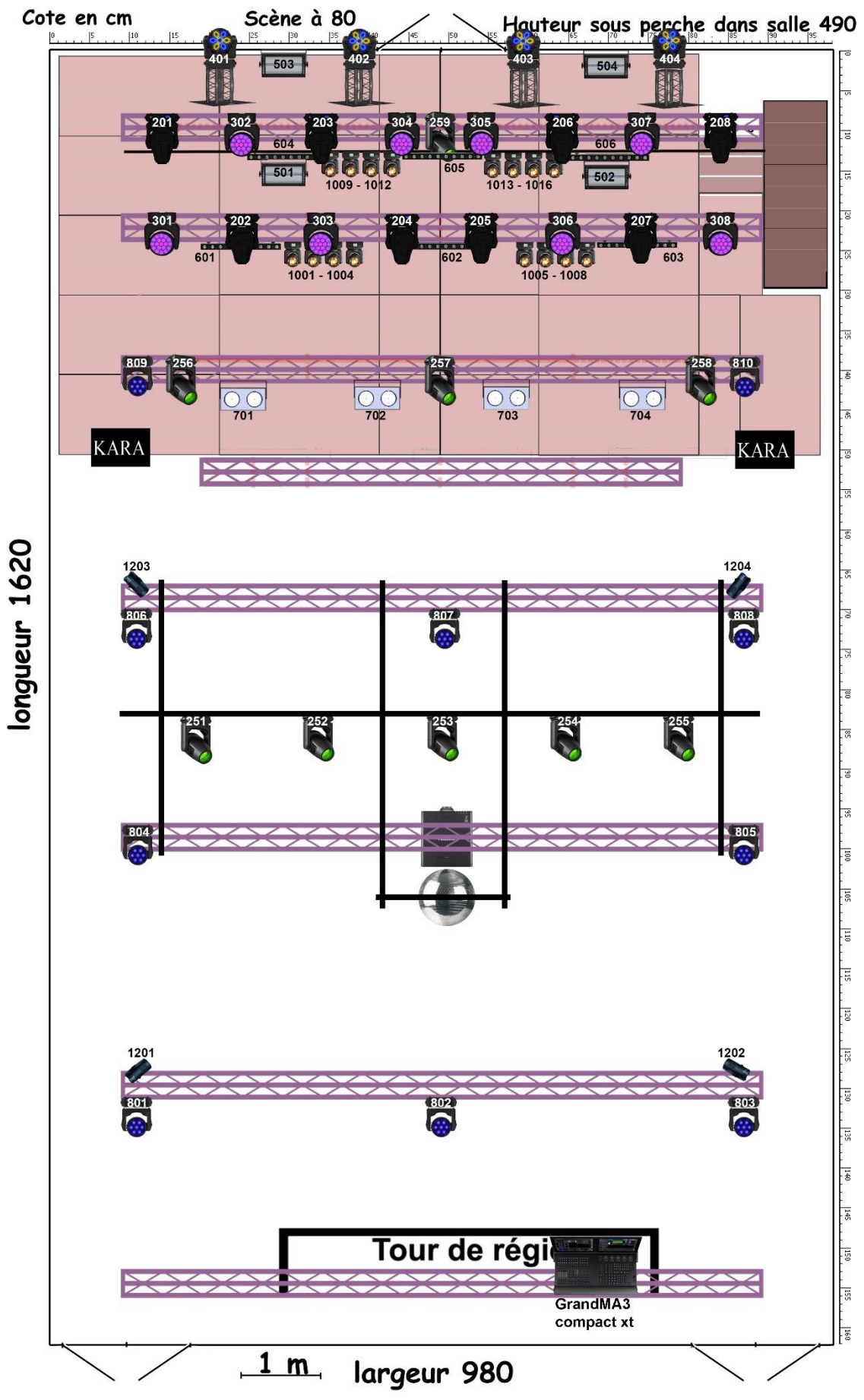
6 X Découpe 750W *ETC Source*

Hazer

1 x Tour Hazer II, Smoke Factory

Beamer

Panasonic PT-RCQ10 Series




**PATCH NOUVEAU MONDE
SEPTEMBRE 2024**


manufacturer / model CHANNEL	fixID	ADRESSE
------------------------------	-------	---------


Dimmer 52CH	101-152	1.001
-------------	---------	-------

Martin / MacQuantum Profile 27CH		
	201	2.001
	202	3.001
	203	2.028
	204	3.028
	205	3.055
	206	2.055
	207	3.082
	208	2.082

Ayrton / Diablo Profile TC 56CH		
	251	5.001
	252	5.057
	253	5.113
	254	5.169
	255	5.225
	256	4.001
	257	4.057
	258	4.113
	259	2.363

Martin / MacAura XB 25CH		
	301	3.109
	302	2.109
	303	3.134
	304	2.134
	305	2.159
	306	3.159
	307	2.184
	308	3.184

Martin / MacAura XIP 93CH		
	401	6.001
	402	6.094
	403	7.001
	404	7.094

Martin / Atomic 3000 LED 14CH		
	501	2.335
	502	2.349
	503	6.187
	504	7.187

Showtec / Sunstrip Active 10CH		
	601	3.209
	602	3.219
	603	3.229
	604	2.209
	605	2.219
	606	2.229


manufacturer / model CHANNEL	fixID	ADRESSE
Elation / CUEPIX Blinder WW2 4CH 	701	4.169
	702	4.173
	703	4.177
	704	4.181

Martin / ERA 150 Wash 18CH		
	801	5.281
	802	5.299
	803	5.317
	804	5.335
	805	5.353
	806	5.371
	807	5.389
	808	5.407
	809	4.185
	810	4.203

Martin / ELP PAR 14CH		
	901	6.201
	902	6.215
	903	7.201
	904	7.215
	905	6.229
	906	6.243
	907	6.257
	908	7.229
	909	7.243
	910	7.257

Cameo / Nano Beam 600 12CH		
	1001	3.239
	1002	3.251
	1003	3.263
	1004	3.275
	1005	3.287
	1006	3.299
	1007	3.311
	1008	3.323
	1009	2.239
	1010	2.251
	1011	2.263
	1012	2.275
	1013	2.287
	1014	2.299
	1015	2.311
	1016	2.323

Smoke Factory : Tour Hazer II 2CH	1101	6.271
Stairville Fan-200 3CH	1102	6.273

EuroLite LED PST-15W 6CH		
	1201	5.425
	1202	5.431
	1203	5.437
	1204	5.443